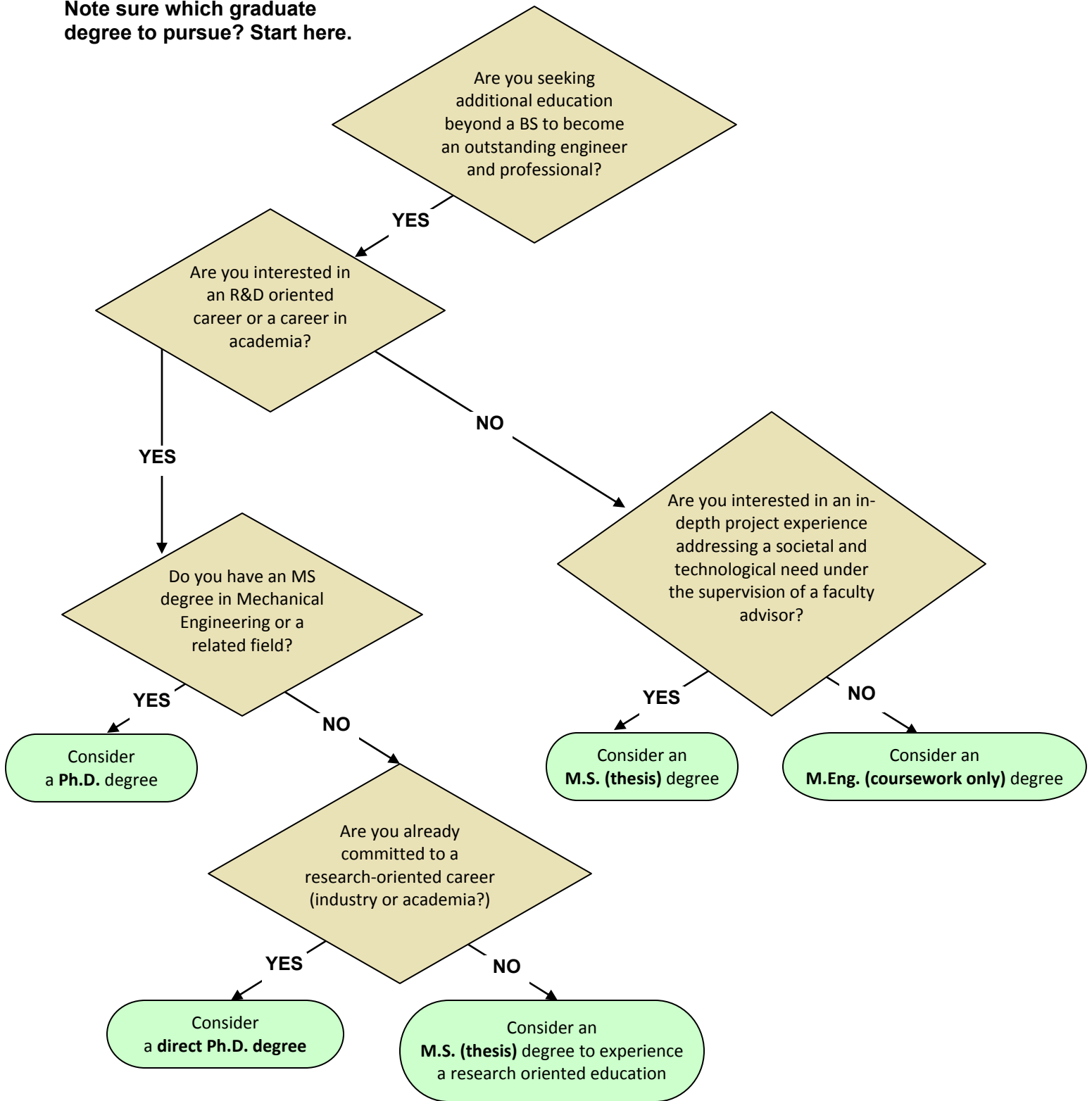


Note sure which graduate degree to pursue? Start here.



Degree tracks:

M.S. and Ph.D. in Mechanical Engineering

M.S. and Ph.D. (interdepartmental) in Human Computer Interaction and Biorenewable Resources and Technology.

M. Eng. degree in Mechanical Engineering and Systems Engineering (Interdepartmental)